

# FIF-10A USB PROGRAMMING INTERFACE

The **FIF-10A** is the Interface Unit which allows cloning of channel data to Vertex Standard transceivers,\* and/or re-writing of the firmware on some Vertex Standard transceivers,\* using the USB port of a personal computer.

\*: Check with your Vertex Standard Dealer for applicable models.

## OPERATING SYSTEM REQUIREMENTS

Microsoft® Windows® 2000 or Windows® XP

## PACKING LIST

FIF-10A Interface Unit  
 USB Cable  
 CD-ROM (Includes the Driver File and Operating Manual)

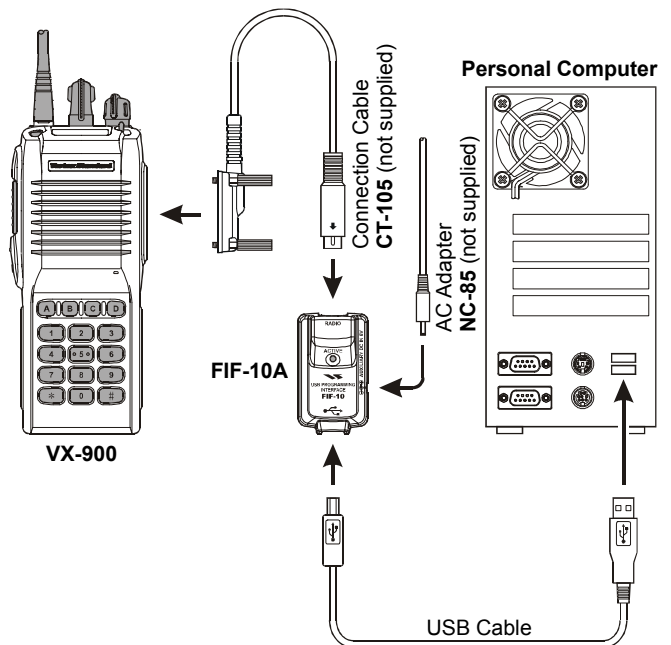
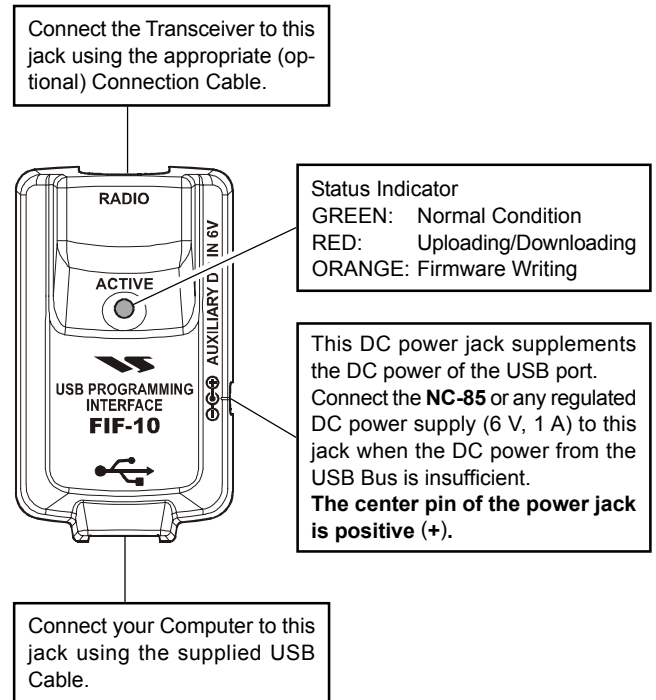
## OPERATION

- ❑ **Log on to the computer using the "Administrator" account.** If you do not know how to change the account to "Administrator," please consult your computer system administrator.
- ❑ Connect the supplied USB Cable between the **FIF-10A** and your computer, then connect the appropriate Connection Cable (option) between the **FIF-10A** and the transceiver.
- ❑ When turning on your computer for the time after connecting the **FIF-10A** to your computer, the computer will ask for the **FIF-10A** driver. Please see page 2 and 3 regarding driver installation.  
 Confirm the computer's communication port which detects the **FIF-10A**. Describe details on the page 4 and 5.
- ❑ Turn on the transceiver (the **VX-600/-800/-820/-900/-920**'s Firmware can be re-written while the radio is turned off).
- ❑ Execute the cloning/writing software (for example, "CE39"). If this is the first time you have executed the programming/writing software on this computer after installing the **FIF-10A** USB Interface, check the programming/writing software's "CONFIGURE" parameter, to be sure that the communication port of the programming/writing software matches that set for the **FIF-10A**. See page 6 for details.

**Note:** When the DC power from the USB Bus is insufficient, connect the **NC-85** or any regulated DC power supply (6 V, 1 A) to the DC power jack of the **FIF-10A**. Be sure to use the correct polarity when connecting the regulated DC power supply; **the center pin of the power jack is positive (+)**.

## OPTIONS

- CT-104A** Connection Cable with 6-pin Modular Jack (for the **VX-4100/-4200, VXR-9000** etc.)
- CT-105** Connection Cable with 14-pin Universal Connector (for the **VX-600/-800/-900** etc.)
- CT-106** Connection Cable 4-conductor Mini-phone Jack (for the **VX-160/-180/-410/-420** etc.)
- CT-108** Connection Cable with 14-pin Universal Connector (for the **VX-820/-920** etc.)
- NC-85** AC Adapter



**TYPICAL SETUP FOR THE FIF-10A**

**VERTEX STANDARD CO., LTD.**  
 4-8-8 Nakameguro, Meguro-Ku, Tokyo 153-8644, Japan  
**VERTEX STANDARD**  
**US Headquarters**  
 10900 Walker Street, Cypress, CA 90630, U.S.A.

# INSTALLATION PROCEDURE FOR THE FIF-10A DRIVER (Microsoft® Windows® 2000)

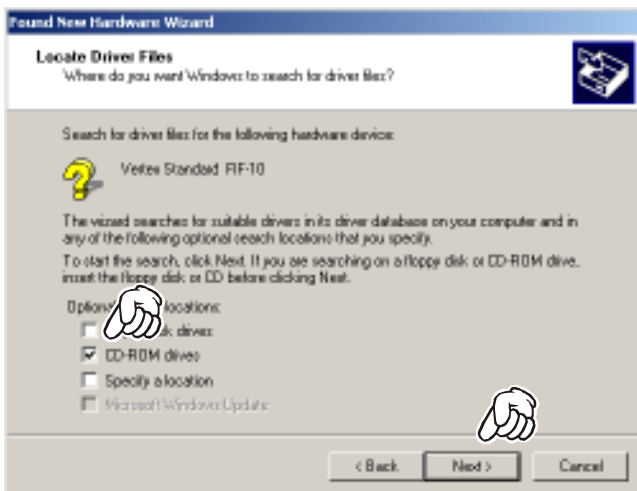
1. Set the supplied CD into your CD-ROM drive.
2. Click the *left* mouse button on the “Next >” button.



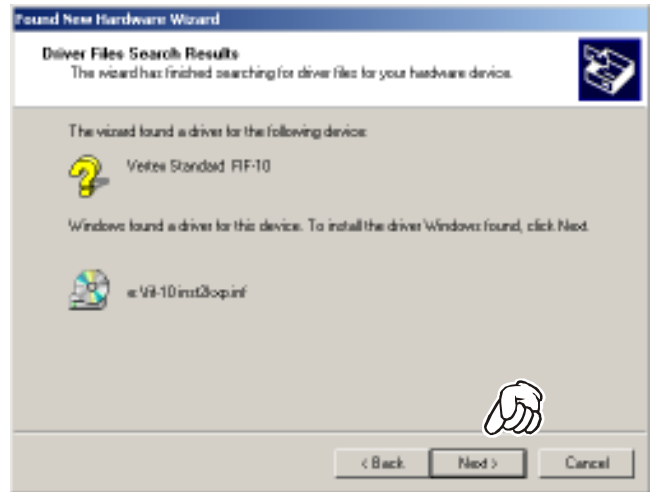
3. Select “Search for a suitable driver for my device,” then click the *left* mouse button on the “Next >” button.



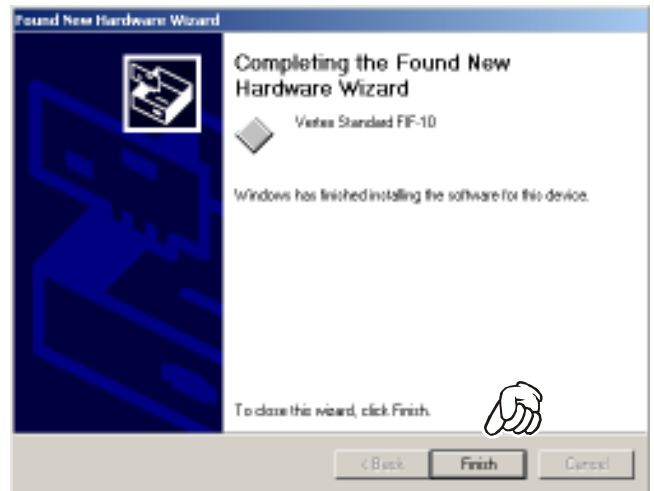
4. Select “CD-ROM drives,” then click the *left* mouse button on the “Next >” button.



5. Click the *left* mouse button on the “Next >” button.



6. Click the *left* mouse button on the “Finish” button.

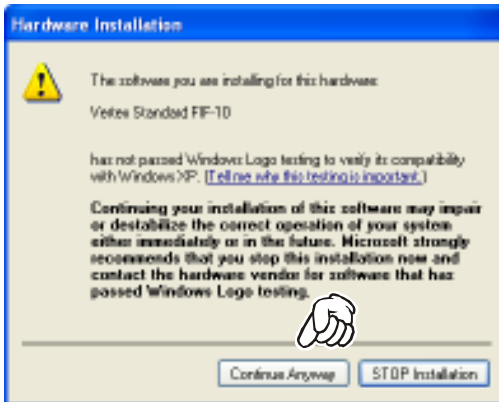


## INSTALLATION PROCEDURE FOR THE FIF-10A DRIVER (Microsoft® Windows® XP)

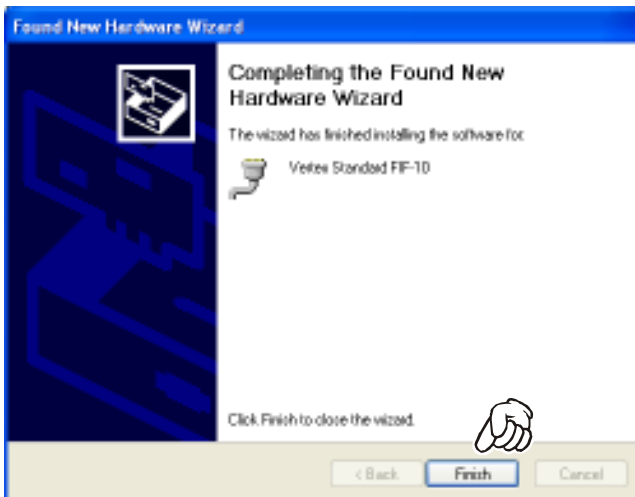
1. Set the supplied CD into your CD-ROM drive.
2. Select “Install the software automatically,” then click the *left* mouse button on the “Next >” button.



3. Click the *left* mouse button on the “Continue Anyway” button.

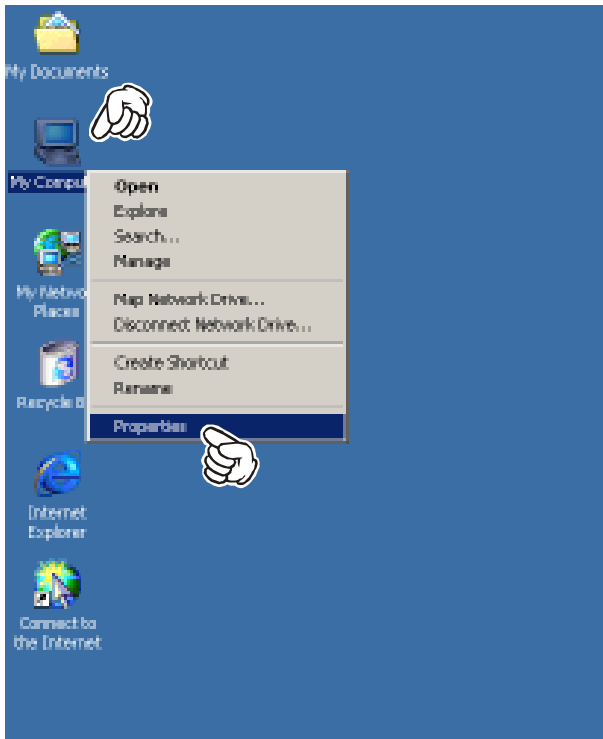


4. Click the *left* mouse button on the “Finish” button.

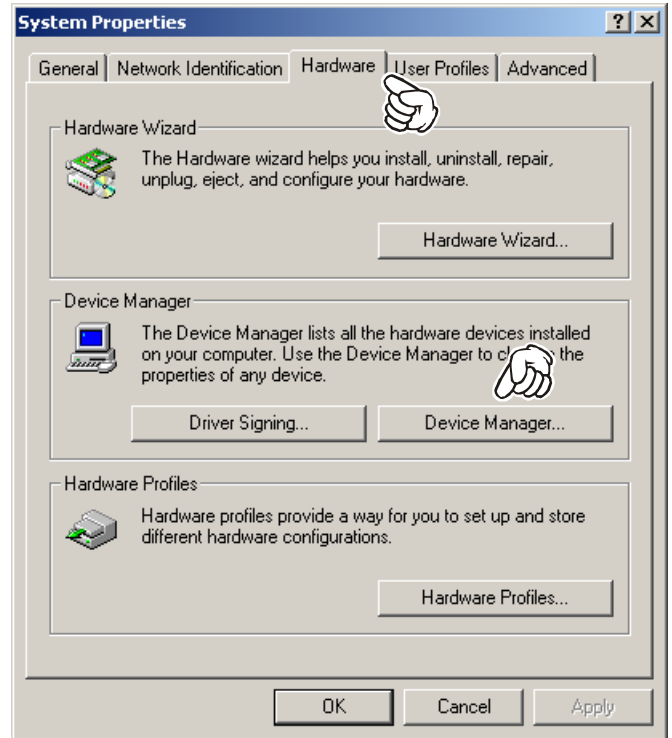


## CONFIRMING THE COMPUTER'S COMMUNICATION PORT (Microsoft® Windows® 2000)

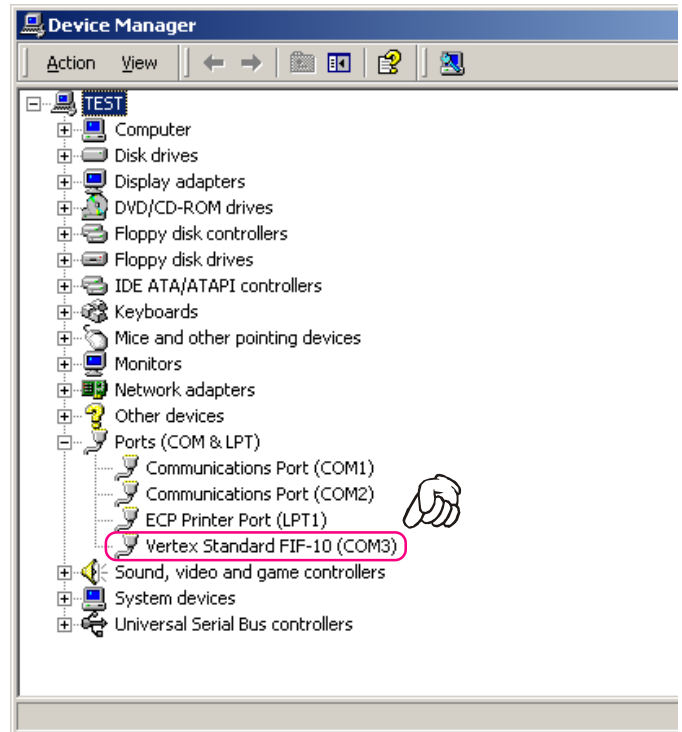
1. Click the *right* mouse button on the “My Computer” icon on the desktop, then click the left mouse button on the “Properties” item to open the “System Properties” window.



2. Click the *left* mouse button on the “Hardware” Folder, then click the *left* mouse button on the “Device Manager” Button to open the “Device Manager” window.

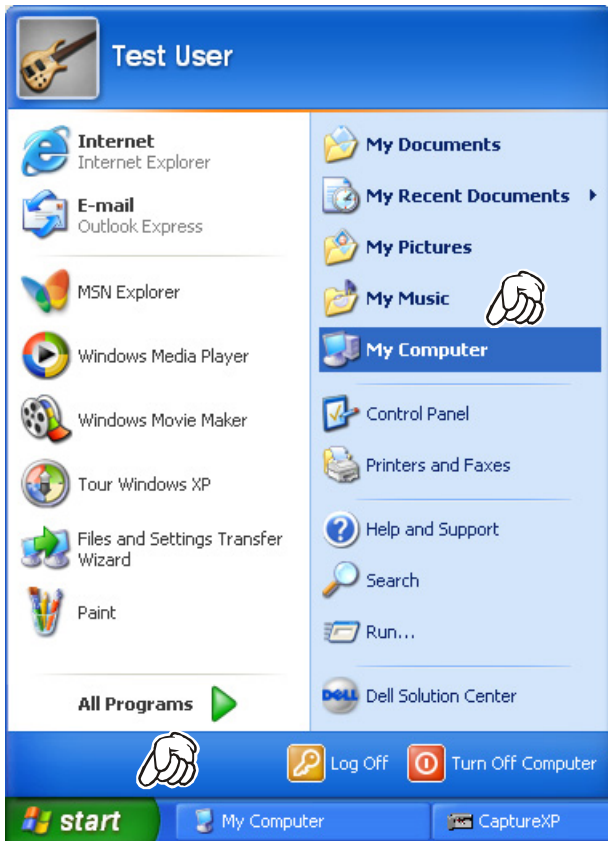


4. Confirm the computer's communication port which detects the FIF-10A.



## CONFIRMING THE COMPUTER'S COMMUNICATION PORT (Microsoft® Windows® XP)

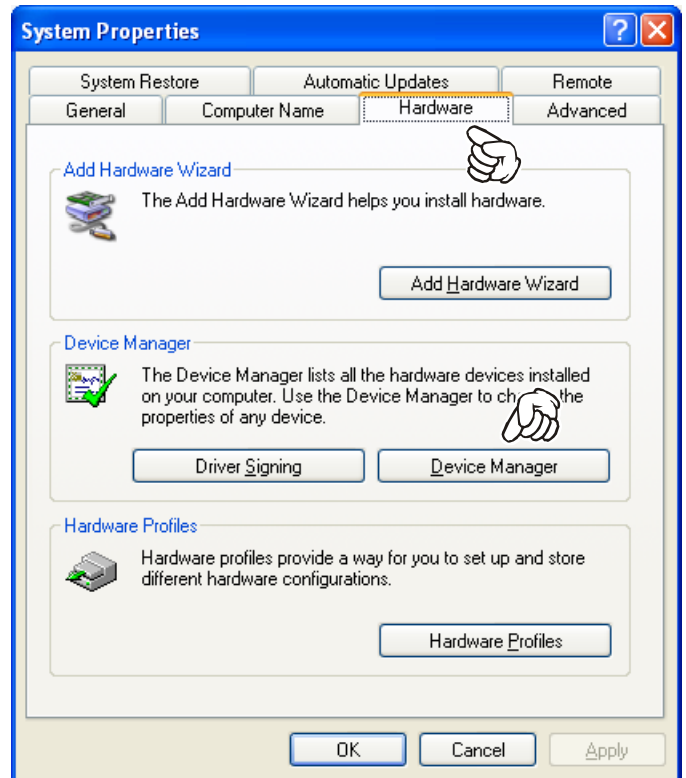
1. Click the *left* mouse button on the “**start**” button, then click the *left* mouse button on the “**My Computer**” item.



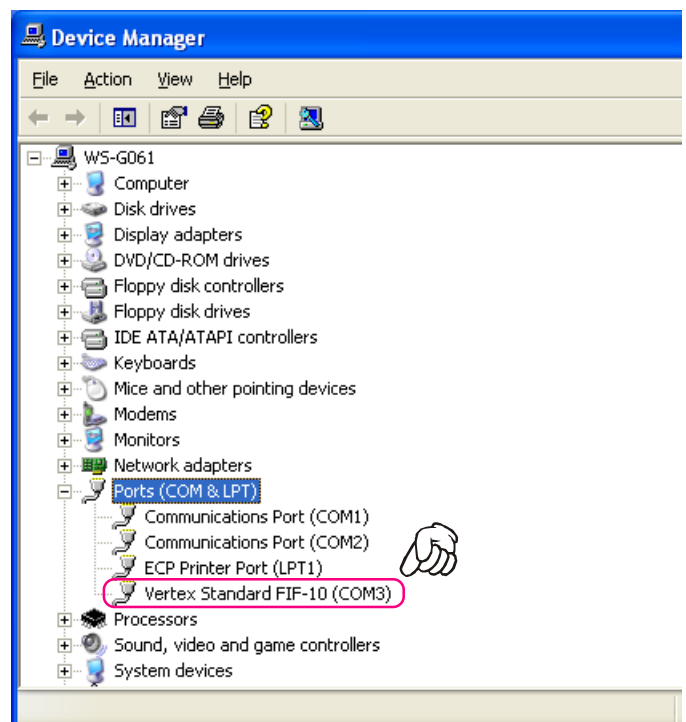
2. Click the *left* mouse button on “**View system information**” to open the “**System Properties**” window.



3. Click the *left* mouse button on the “**Hardware**” Folder, then click the *left* mouse button on the “**Device Manager**” button to open the “**Device Manager**” window.

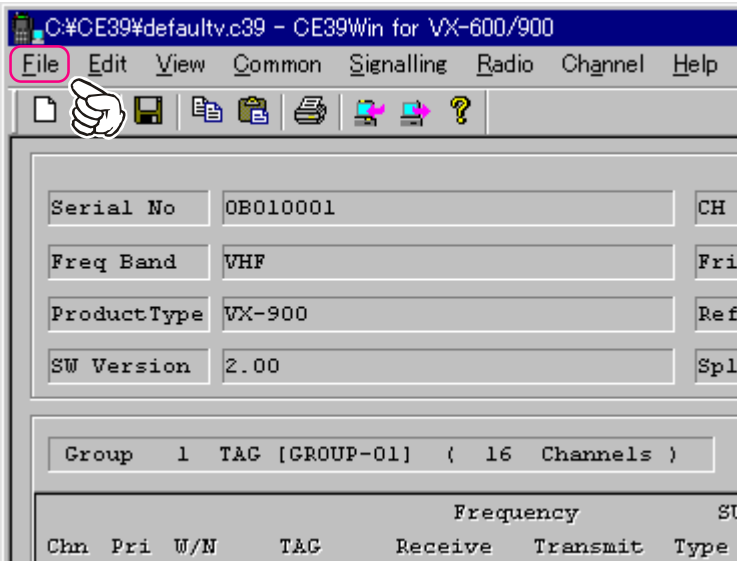


4. Confirm the computer's communication port which detects the **FIF-10A**.

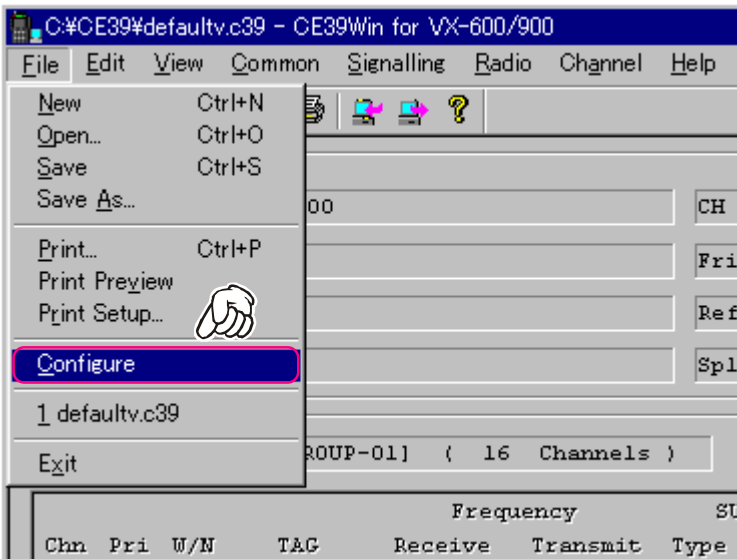


## “CONFIGURE” PARAMETER SETTING PROCEDURE (EXAMPLE: “CE39”)

1. Click the *left* mouse button on the “File” parameter.



2. Click the *left* mouse button on the “Configure” item to open the “Configure” window.



3. Select the communication port which is detecting the FIF-10A, then click the *left* mouse button on the “OK” button.

